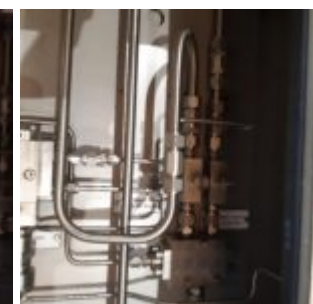


Cabinet for Shutdown Valve - FRAMES



Manufacturer: FRAMES

Description: These units are designed to manage safety-critical valves. Its primary job is to control the "Shutdown Valve" (SDV). In the event of a pressure spike, leak, or fire, this panel triggers the valve to close instantly to prevent a disaster.

Condition: Good

Stock: 1

External ID: 3837708

Internal ID: 12518

Category: Valves

Subcategory: Valves, Other

Dimension (L x B x H) [m]: 0,60x0,26x0,59

Weight [kg]: 40

URL:

<https://www.modernamericanrecyclingservices.com/equipment/cabinet-for-shutdown-valve-3837708/>

Frederikshavn, Denmark

European Large Scale Recycling

Sandholm 55H

9900 Frederikshavn

+45 53365179

kim@mars-eu.dk